

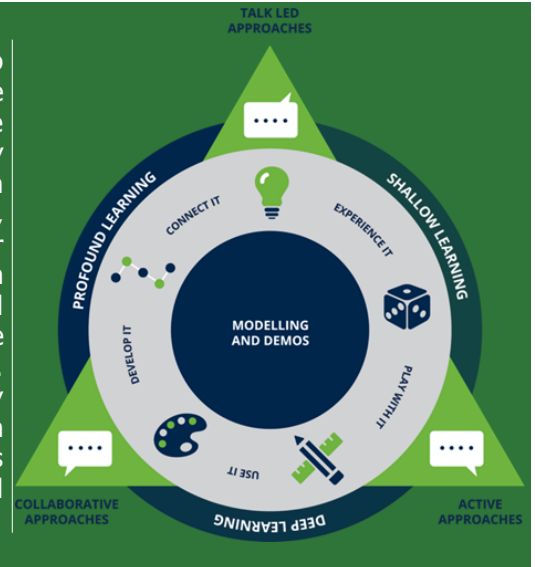


LEECHPOOL CURRICULUM Newsletter



Teaching and Learning

This term, we have been updating our teaching and learning policy to ensure it provides a framework and showcases the excellent practice that we see every day in our classrooms around the school. We are aspirational for all children at Leechpool and our updated policy explains how we will create a learning environment of high expectations where pupils learn best. Through collaboration, training, and work completed with TT education over the past few years, our teaching at Leechpool follows the Path to Success model (illustrated on the right) and is applied across the curriculum. It develops and enriches children's ability to problem-solve, think creatively, improve their skills as learners and actively engage in the learning process. High-quality modelling and demonstration should be underpinned by an active, talk-led, collaborative learning climate in which children move from learners to teachers. Read more about Paths to Success and many of our teaching strategies that lead to a high level of pupil achievement in our [teaching and learning policy](#).



Harvest Assembly

During the year, a class from each year group performed for our harvest assembly and the other half of our classes will perform for the Easter assembly in the spring. It is always a brilliant way to come together as a school and give thanks for what we have and be able to donate to Horsham Matters. We were treated to poems, songs, art work, and even a self-written vegetable rap to the tune of Fresh Prince of Bel-Air. Father Russel also joined us to talk with the children during the assembly. It was a great celebration of our talents here at Leechpool and after the half term break, our attentions will soon turn to showcasing more of our music and drama talents for the Christmas productions.



Homework

At Leechpool Primary School, we believe that education is a co-operative partnership between the school, child and the home. We know that homework can make an important contribution to pupils' progress at school, especially when families are actively involved. In formulating our Homework Policy a few years ago, we listened to the views of families and have noted the recommendations of the DfE. Above all, we have carefully considered what is reasonable for the children in our school. Children should be encouraged to see homework as a positive experience and never an unpleasant one. This policy is revised and updated each year.

Some key points to note:

- Homework each term is set for 10 weeks. The spread of these 10 weeks across the term may be different for different year groups.
- Seesaw is used to set homework in KS1 and Google Classroom is used in KS2

Please do read our [homework policy](#) as it shows a breakdown of the expectations for each year group. Speak to your child's class teacher if you have any questions.